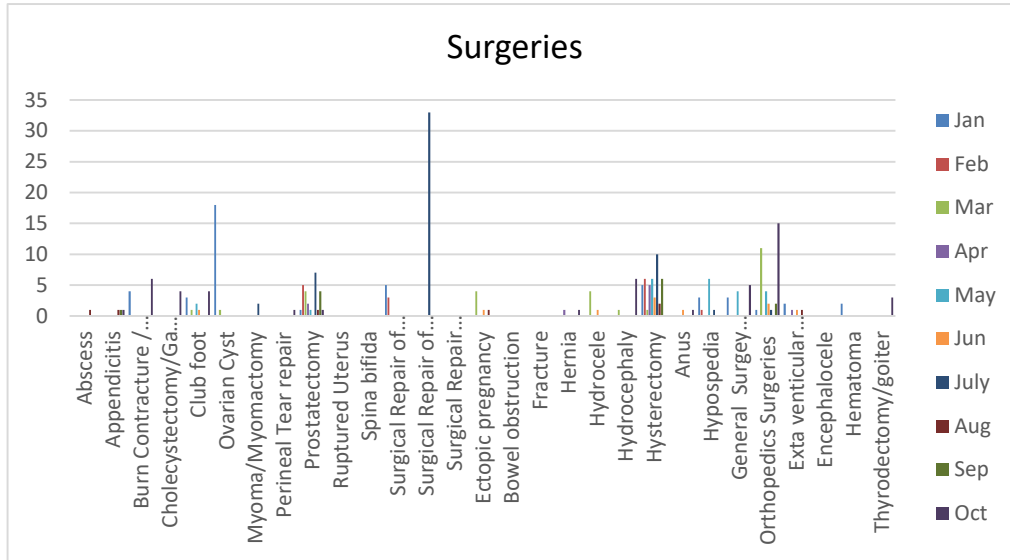


50	Food poisoning	382	0	0	0	0	0	0	0	4	0	0	386
51	Gastroenteritis (GE/GI)	4043	2	4	6	8	0	3	2	2	3	0	4073
52	Gun shot wound	27	0	0	0	0	0	0	0	0	0	0	27
53	Headache (no other attributable reason)	478	0	0	0	0	0	0	0	0	0	0	478
54	Head injury	41	0	0	0	0	0	0	0	0	0	0	41
55	Hemorrhagic Disease of Newborn	36	0	0	0	0	0	0	0	0	0	0	36
56	Hepatitis	227	1	0	0	0	0	0	0	1	0	0	229
57	Herpes simplex	16	0	0	0	0	0	0	0	0	0	0	16
58	Hydatiform Mole	33	0	0	0	0	0	0	0	0	0	0	33
59	Hypercholesterol	105	0	0	0	0	0	0	0	0	0	0	105
60	Hyperemesis gravidum	522	1	3	1	0	3	1	2	1	0	0	534
61	Hypertension (HTN)	2025	5	0	0	0	1	1	1	0	0	3	2036
62	Hyperthyroid	16	0	1	0	0	0	0	0	0	0	0	17
63	Hypotension/Low blood pressure	63	0	0	0	0	0	0	0	0	0	0	63
64	Hypothermia	29	0	0	0	0	0	0	0	0	0	0	29
65	Hypothyroid/Goiter	60	0	0	0	0	0	0	0	0	0	0	60
66	Hysteria	246	0	0	0	0	0	0	0	0	0	0	246
67	Ischemic Heart Disease (IHD)	156	0	0	0	0	0	0	0	1	0	0	157
68	Insomnia	89	0	0	0	0	0	0	0	0	0	0	89
69	Jaundice (newborn)	85	0	0	0	0	0	0	0	0	0	0	85
70	Laceration	57	0	0	0	0	0	0	0	0	0	0	57
71	Lower respiratory tract infection (LRTI)	47	0	0	0	0	0	0	0	0	0	0	47
72	Lymphadenoma	9	0	0	0	0	0	0	0	0	0	0	9
73	Malaria	65	0	0	0	0	0	0	1	0	0	0	66
74	Malnutrition	209	0	0	0	0	0	0	0	0	0	0	209
75	Mastitis	20	0	0	0	0	0	0	0	0	0	0	20
76	Measles	152	0	0	0	0	0	0	0	0	0	0	152
77	Meconium aspiration syndrome	81	0	0	0	0	0	0	0	0	0	0	81
78	Meningitis	131	0	0	1	0	1	0	0	0	0	1	134
79	Migraine	111	0	0	0	0	0	0	0	0	0	0	111
80	Miscarriage/spontaneous abortion	229	0	0	0	0	0	0	0	0	0	0	229
81	Multiple Organ Failure (MOF)	43	0	0	0	0	0	0	0	0	0	0	43
82	Mumps	50	0	0	0	0	0	0	0	0	0	0	50
83	Myocardial Infarction (MI)	232	0	0	0	0	0	0	1	0	0	0	233

Number of Hospital Surgeries from 9 March 2002 up to 31 October 2023

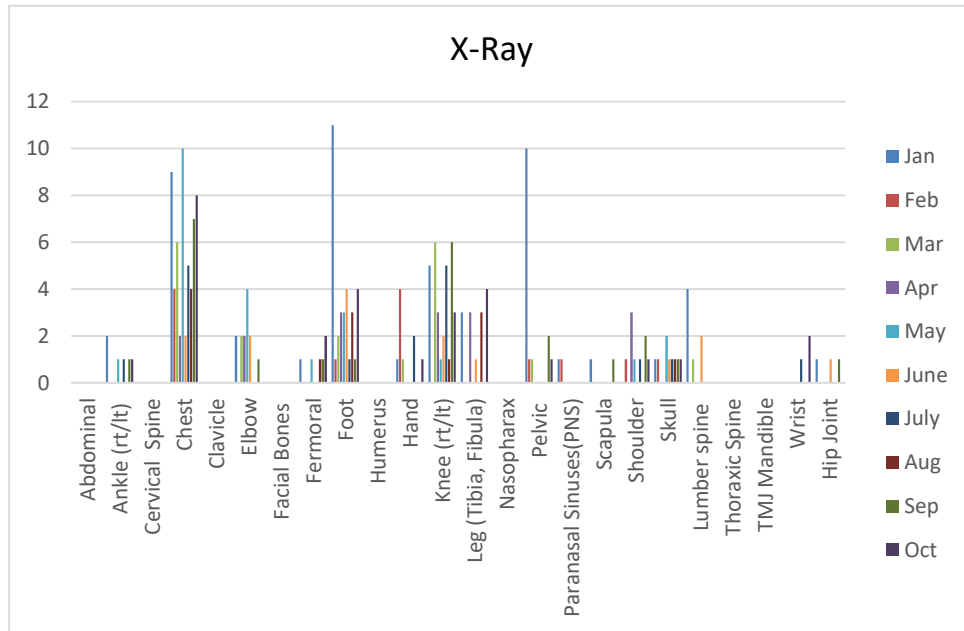
No.	Description	2000-2022	Jan	Feb	Mar	Apr	May	Jun	July	Aug	Sep	Oct	Total
1	Abscess	340	0	0	0	0	0	0	0	1	0	0	341
2	Appendicitis	251	0	0	0	0	0	0	0	1	1	1	254
3	Burn Contracture / Burn wound	447	4	0	0	0	0	0	0	0	0	6	457
4	Cholecystectomy/Gallstones	255	0	0	0	0	0	0	0	0	0	4	259
5	Club foot	320	3	0	1	0	2	1	0	0	0	4	331
6	Ovarian Cyst	43	18	0	1	0	0	0	0	0	0	0	62
7	Myoma/Myomectomy	48	0	0	0	0	0	0	2	0	0	0	50
8	Perineal Tear repair	131	0	0	0	0	0	0	0	0	0	1	132
9	Prostatectomy	34	1	5	4	2	1	0	7	1	4	1	60
10	Ruptured Uterus	15	0	0	0	0	0	0	0	0	0	0	15
11	Spina bifida	322	0	0	0	0	0	0	0	0	0	0	322
12	Surgical Repair of Cleft Lips and palate	1036	5	3	0	0	0	0	0	0	0	0	1044
13	Surgical Repair of Recto-Vaginal Fistula	90	0	0	0	0	0	0	33	0	0	0	123
14	Surgical Repair Vessico-Vaginal Fistula	279	0	0	0	0	0	0	0	0	0	0	279
15	Ectopic pregnancy	90	0	0	4	0	0	1	0	1	0	0	96
16	Bowel obstruction	79	0	0	0	0	0	0	0	0	0	0	79
17	Fracture	80	0	0	0	0	0	0	0	0	0	0	80
18	Hernia	128	0	0	0	1	0	0	0	0	0	1	130
19	Hydrocele	41	0	0	4	0	0	1	0	0	0	0	46
20	Hydrocephaly	710	0	0	1	0	0	0	0	0	0	6	717
21	Hysterectomy	169	5	6	1	5	6	3	10	2	6	0	213
22	Anus	4	0	0	0	0	0	1	0	0	0	1	6
23	Hypospelia	15	3	1	0	0	6	0	1	0	0	0	26
24	General Surgey Operations	7	3	0	0	0	4	0	0	0	0	5	19
25	Orthopedics Surgeries	3	1	0	11	0	4	2	1	0	2	15	39
26	Exta ventricular Drainage (EVD)	71	2	0	0	1	0	1	0	1	0	0	76
27	Encephalocele	22	0	0	0	0	0	0	0	0	0	0	22
28	Hematoma	1	2	0	0	0	0	0	0	0	0	0	3
28	Thyrodectomy/goiter											3	3
	Surgical Sub-Total	4950	47	15	27	9	23	10	54	7	13	45	5155
	Grand Total	34146	79	48	55	34	51	28	74	28	26	74	34598



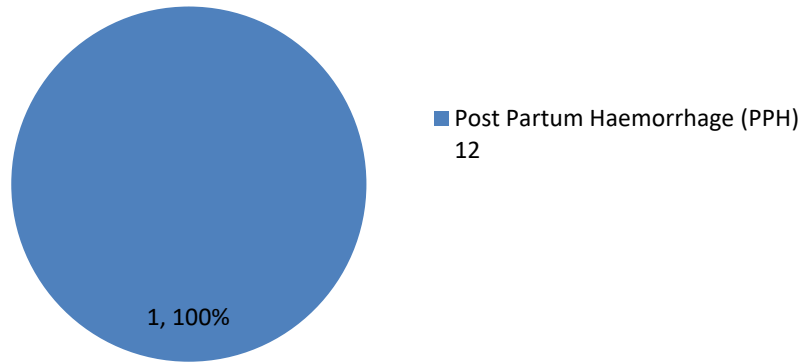
X-Ray Tests Done From 14 January 2015 up to 31 October 2023

No.	Description	2000-2022	Jan	Feb	Mar	Apr	May	June	July	Aug	Sep	Oct	Total
1	Abdominal	99	0	0	0	0	0	0	0	0	0	0	99
2	Ankle (rt/lt)	27	2	0	0	0	1	0	1	0	1	1	33
3	Cervical Spine	7	0	0	0	0	0	0	0	0	0	0	7
4	Chest	1118	9	4	6	2	10	2	5	4	7	8	1175
4	Clavicle	12	0	0	0	0	0	0	0	0	0	0	12
5	Elbow	41	2	0	2	2	4	2	0	0	1	0	54
6	Facial Bones	7	0	0	0	0	0	0	0	0	0	0	7
7	Femoral	32	1	0	0	0	1	0	0	1	1	2	38
8	Foot	140	11	1	2	3	3	4	1	3	1	4	173
9	Humerus	6	0	0	0	0	0	0	0	0	0	0	6
10	Hand	96	1	4	1	0	0	0	2	0	0	1	105
11	Knee (rt/lt)	108	5	0	6	3	1	2	5	1	6	3	140
12	Leg (Tibia, Fibula)	67	3	0	0	3	0	1	0	3	0	4	81

13	Nasopharax	5	0	0	0	0	0	0	0	0	0	0	5
14	Pelvic	40	10	1	1	0	0	0	0	0	2	1	55
15	Paranasal Sinuses(PNS)	3	1	1	0	0	0	0	0	0	0	0	5
16	Scapula	3	1	0	0	0	0	0	0	0	1	0	5
17	Shoulder	53	0	1	0	3	1	0	1	0	2	1	62
18	Skull	42	1	1	0	0	2	1	1	1	1	1	51
19	Lumber spine	39	4	0	1	0	0	2	0	0	0	0	46
20	Thoracic Spine	11	0	0	0	0	0	0	0	0	0	0	11
21	TMJ Mandible	1	0	0	0	0	0	0	0	0	0	0	1
22	Wrist	27	0	0	0	0	0	0	1	0	0	2	30
23	Hip Joint	20	1	0	0	0	0	1	0	0	1	0	23
Grand Total		2004	52	13	19	16	23	15	17	13	24	28	2224



*** Details and Causes of Maternal Deaths :
March 2002 to 30 April 2022**



Number of Outpatients who Attended OPD Clinics from 9 March 2002 up to 31 October 2023

No.	Description	2000-2022	Jan	Feb	Mar	Apr	May	June	July	Aug	Sep	Oct	Total
1	*General Cases (Male & Female)	47117	36	80	15	30	34	0	32	10	0	7	47361
2	Pre-natal Consultations (New)	26327	125	70	78	135	120	100	53	50	41	40	27139
3	Pre-Natal Consultations (Revisit)	20805	105	65	70	110	75	80	45	7	59	10	21431
4	Post-natal Consultations	4841	45	30			0	0	0	0	0	4	4920
5	Gynaecological Cases	78419	780	572	437	590	390	400	484	624	428	632	83756
6	Ultra- Sound Examinations	53854	592	405	347	440	306	341	415	530	362	545	58137
7	Family Planning	3331	35	20	9	18	11	10	15	21	11	17	3498
8	Pediatric Consultations	15288	25	20	0	0	0	0	0	0	0	0	15333
9	Dressings	4401	18	26	0	4	0	0	0	5	0	3	4457
10	Free Medication	7981	0	0	0	0	0	0	0	0	0	0	7981
11	Total Number of Vaccination	75832	1325	1331	643	1118	1565	1466	775	1086	1437	710	87288
12	Electrocardiography (ECG)	2307	0	0	0	0	0	0	0	0	0	0	2307
13	Cleft Lip and Palate Cases examined	1706	0	0	0	0	0	0	0	0	1	0	1707
	Grand Total	342209	3086	2619	1599	2445	2501	2397	1819	2333	2339	1968	365315

Laboratory Tests Done From 9 March 2002 up to 31 October 2023

No.	Description	2000-2022	Jan	Feb	Mar	Apr	May	June	July	August	Septemb	Oct	Total
1	Hematology	158819	1855	1695	856	765	815	835	833	745	675	928	168821
2	Serology	110390	1315	1410	765	678	838	864	905	914	782	870	119731
3	Blood Group	40560	293	268	315	194	217	255	308	212	205	272	43099
4	Urine Analysis	75649	520	614	400	313	287	348	342	360	283	352	79468
5	Pregnancy Test	18577	125	142	68	74	65	82	70	60	57	72	19392
6	Stool Examinations	18117	74	81	46	70	61	67	56	42	42	55	18711
7	Biochemistry	64779	711	682	420	595	624	572	610	418	514	602	70527
8	Blood Donors Screened	13275	70	76	48	50	48	40	43	62	58	136	13906
9	HIV-Positive Cases Among Donors	37	0	0	0	0	0	0	0	0	0	0	37
10	HIV Positive Cases (In patient & Outpatient)	298	0	0	1	0	0	0	1	0	1	0	301
11	Culture and Sensitivity	993	5	3	4	5	3	4	4	5	4	5	1035
12	Hormones	9684	145	122	205	152	142	312	191	182	126	137	11398
13	blood disorders	260	15	12	7	6	5	4	7	8	6	4	334
Grand Total		511438	5128	5105	3135	2902	3105	3383	3370	3008	2753	3433	546760

